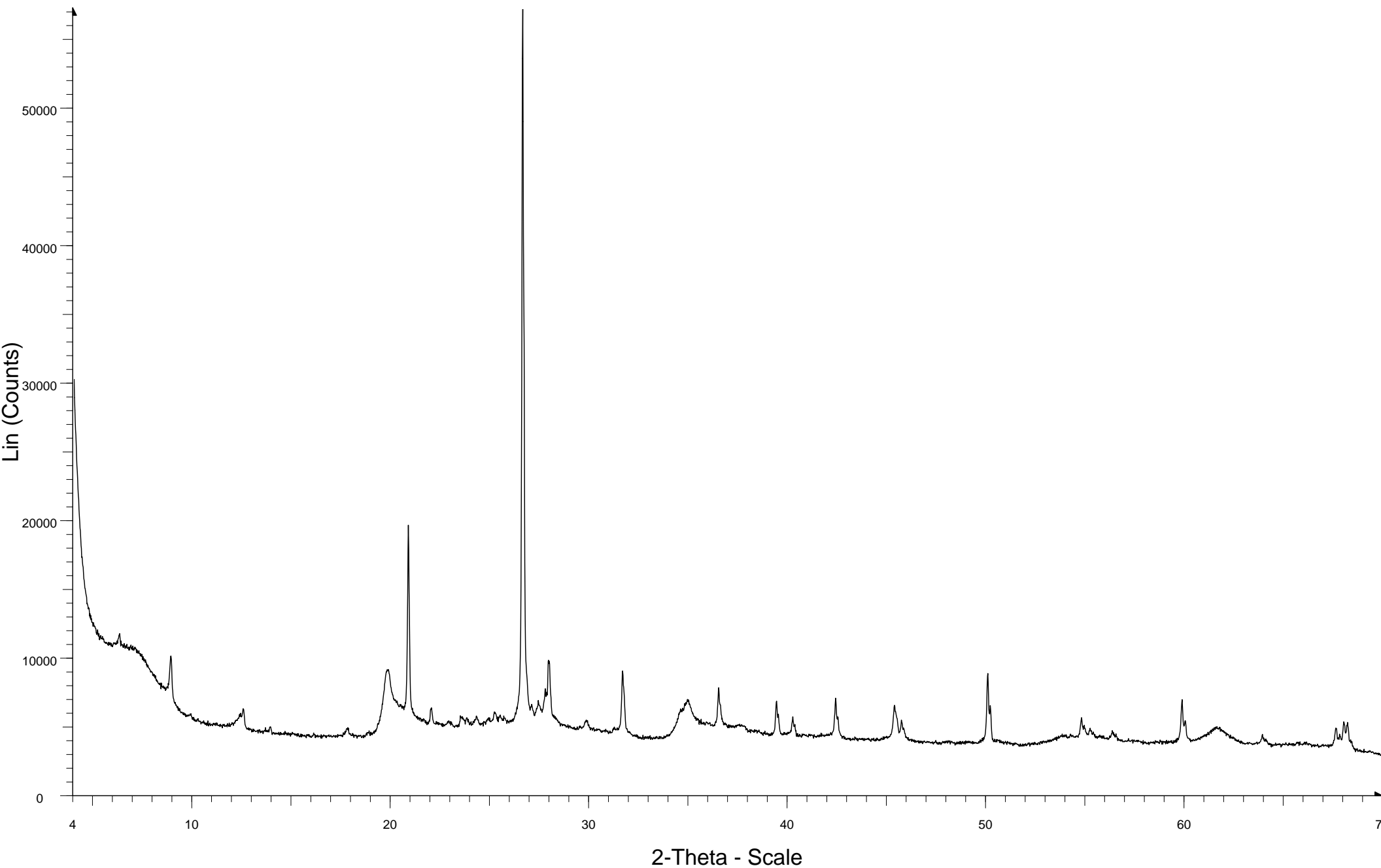


CYL3863581



CYL3863581 - File: CYL3863581.raw - Type: Locked Coupled - Start: 4.000 ° - End: 69.998 ° - Step: 0.017 ° - Step time: 700. s - Temp.: 25 °C (Room) - Time Started: 24 s - 2-Theta: 4.000 ° - Theta: 2.000 ° - Chi: 0.0
Operations: Import