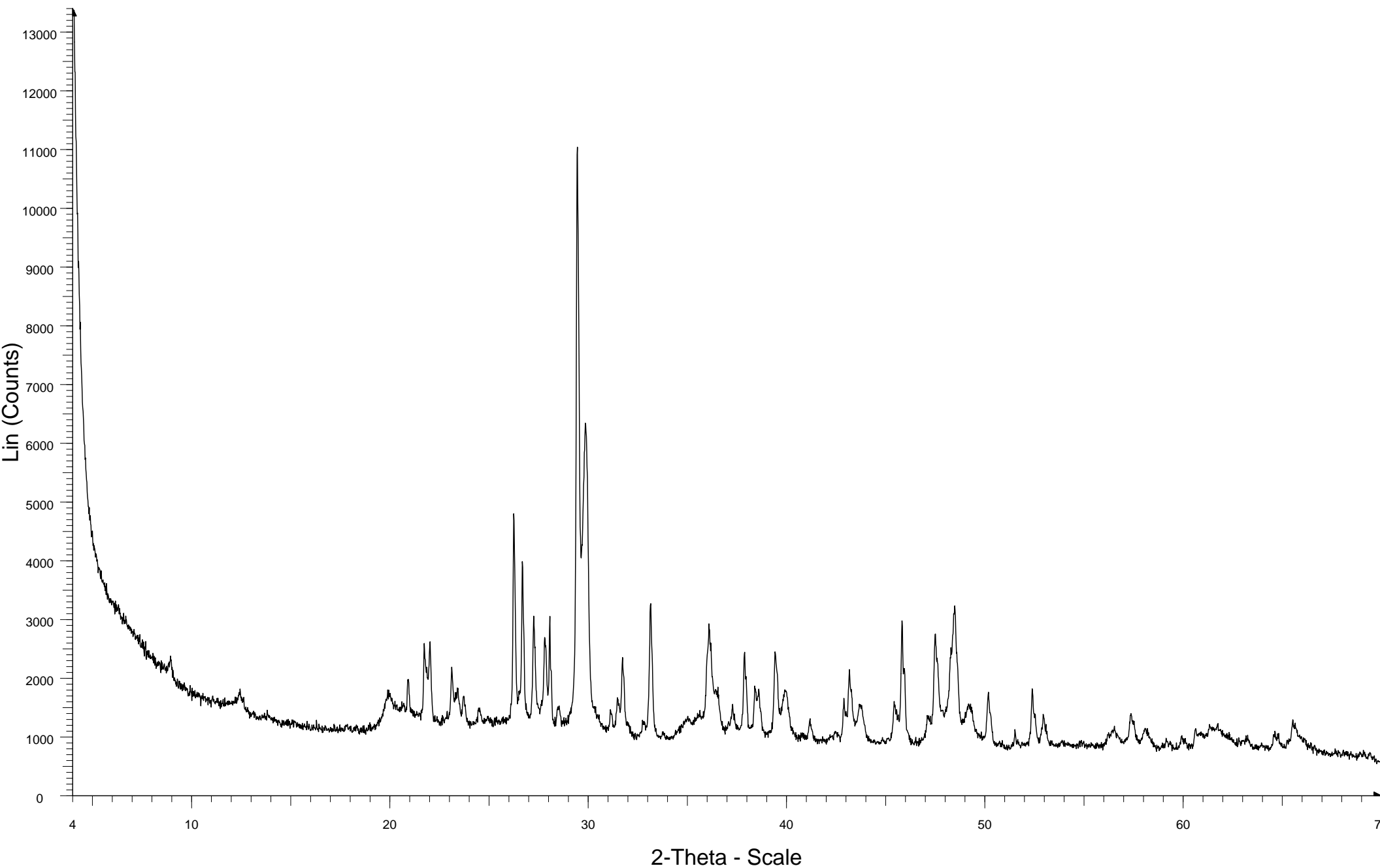



PWDR3709081 U1394A 18X3 71 72



 PWDR3709081 U1394A 18X3 71 72 - File: PWDR3709081 U1394A 18X3 71 72.raw - Type: Locked Coupled - Start: 4.000 ° - End: 69.998 ° - Step: 0.017 ° - Step time: 350. s - Temp.: 25 °C (Room) - Time Started: 2
Operations: Import